

Welcome to the Webinar on Shared Plans of Care

- As you arrive, please sign in to the webinar, listing
 - your name,
 - how many people are in your party,
 - and what county you're from
 - **(if you have already signed in, please enter this information into the text box)**
- Please mute your phone when not actively participating in conversation.
 - Unmute your phone to ask questions.
 - If listening on your computer, please mute your mic to prevent echoes.
 - Don't put us on hold! That usually causes music to play that everyone has to listen to....
- When speaking, be sure to identify yourself.
 - If it's difficult to find space to talk, please use the chat box.
- This webinar will be recorded for note taking purposes, but will not be shared outwardly or posted online.



Agenda

- Introductions
- Housekeeping
 - Family Surveys
 - Regional Meetings
- Last month's topic: *Discharge Planning*
- This month's topic: *Engaging with Primary Care*
- Open discussion
- Closing and reminder of next steps

SPOC Family Survey

- Definition of shared care plan on the survey:
 - *A shared care plan is a written document that contains information about your child's active health problems, medicines he or she is taking, special considerations that all people caring for your child should know, goals for your child's health, growth, and development, and steps to take to reach those goals. It is different than an Individualized Education Program (IEP).*
- We ask: *Does your child have a shared care plan?*
 - We'd like to revise this question and/or the definition.

SPOC Family Survey

What words do you use to describe
shared plans of care to families?

Share your input with Sheryl at
gallarde@ohsu.edu

OCCYSHN Regional Meetings

We are hoping for lots of participation, so please invite your local partners to register! This includes *all* local professionals who work with CYSHCN.

- “Save the Date” was sent out in early January.
- An invitational flyer, including the final agenda and information about logistics and financial support, will come to you **this week**.

Last Month's Webinar Topic

- *Discharge Planning*
- Questions/Thoughts?

This Month's Webinar Topic

Engaging with Primary Care

Ben Hoffman, M.D.

Director of OCCYSHN



Dem Fürsten von Lobkowitz und dem Grafen Rasumoffsky gewidmet

Symphony No. 5 in C Minor

Op. 67

Ludwig van Beethoven
Transcribed by Franz Liszt

Allegro con brio $\text{♩} = 108$

Streicher, KL

ff

p

cresc.

ff

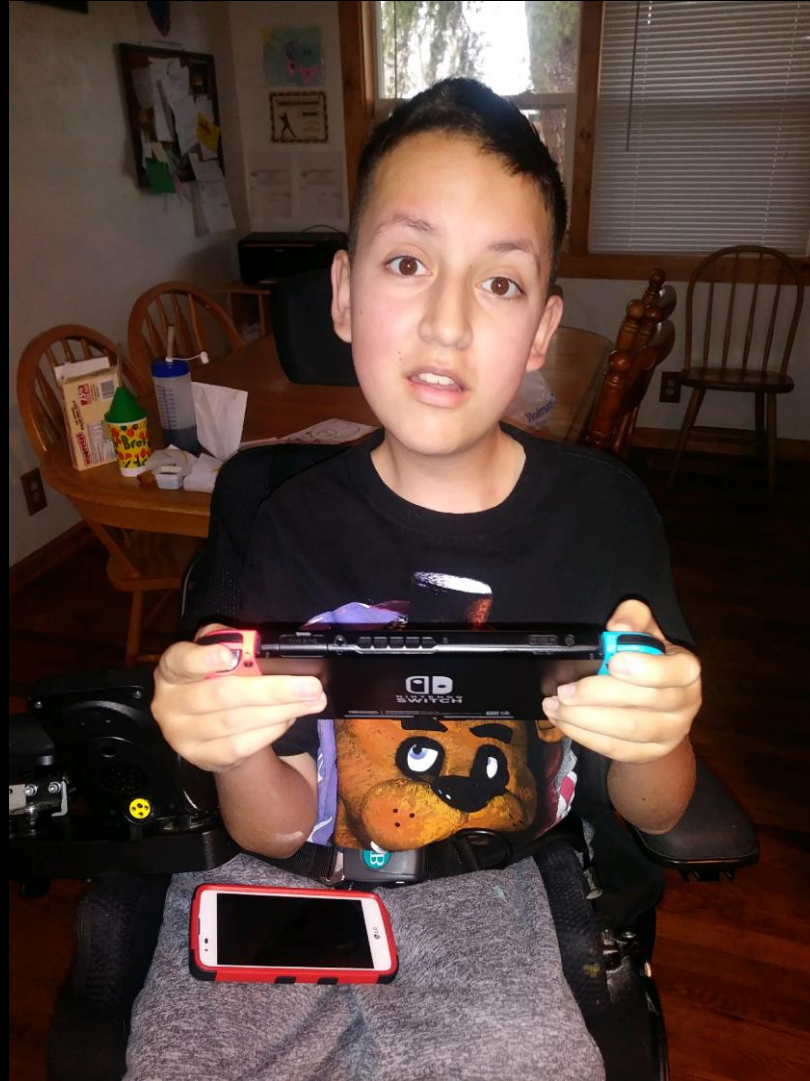
p

cresc.









Home

Public Health

Medical
Equipment

School

Medication

Transportation



Therapies

Emergent Care

Primary Care

Specialty Care

Home

Safe Accessible
Affordable

Public Health

Medical Equipment

School

Appropriate Accessible
IEP/504

Medication

Transportation

Safe Accessible



Therapies

Speech Feeding
OT PT

Emergent Care

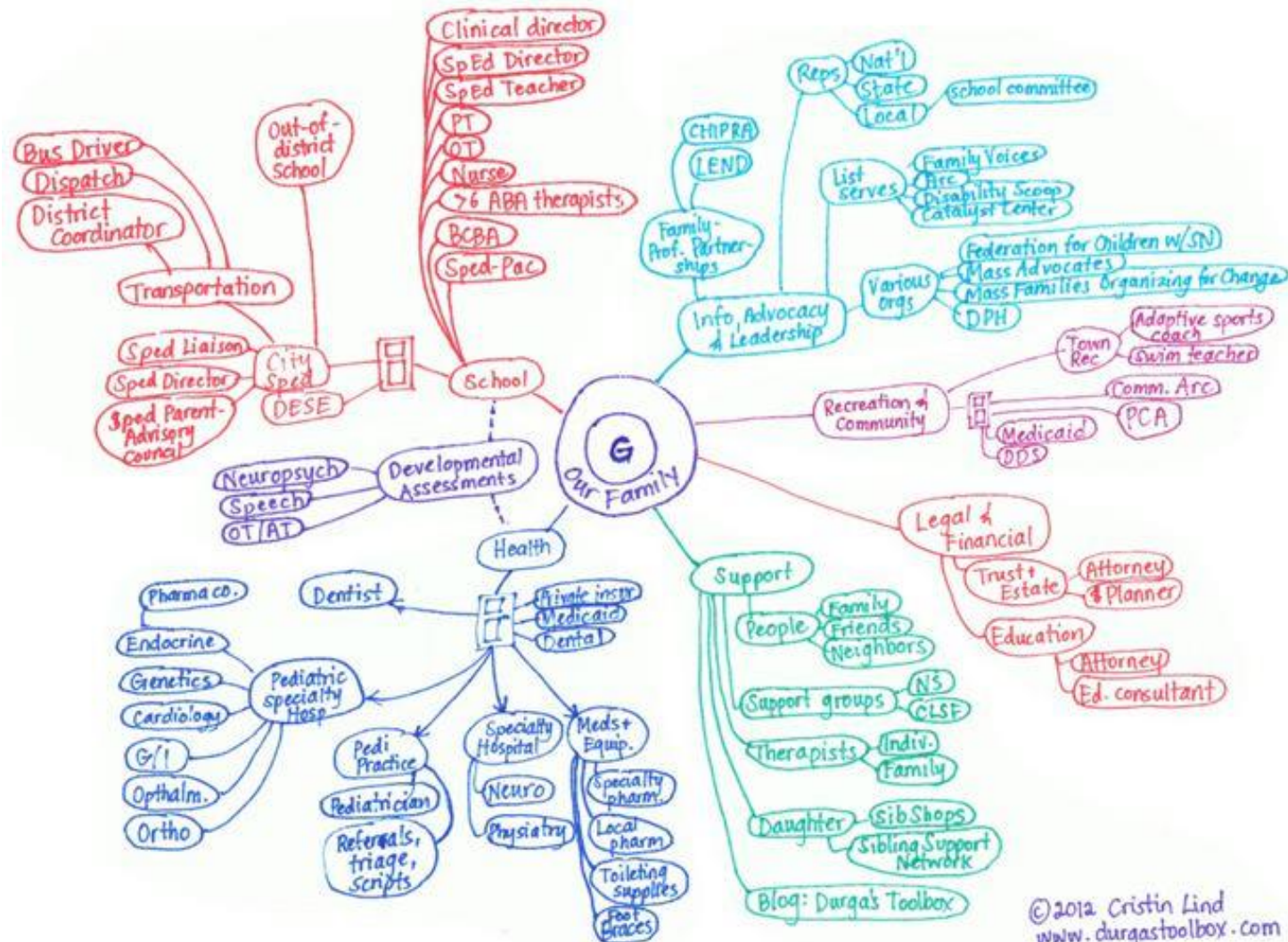
Accessible Capable

Primary Care

Accessible Capable

Specialty Care

Capable Accessible
Pulmonary Pain
Neurodevelopmental GI

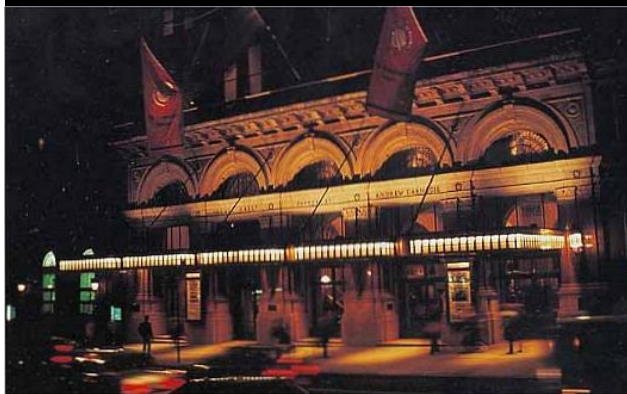
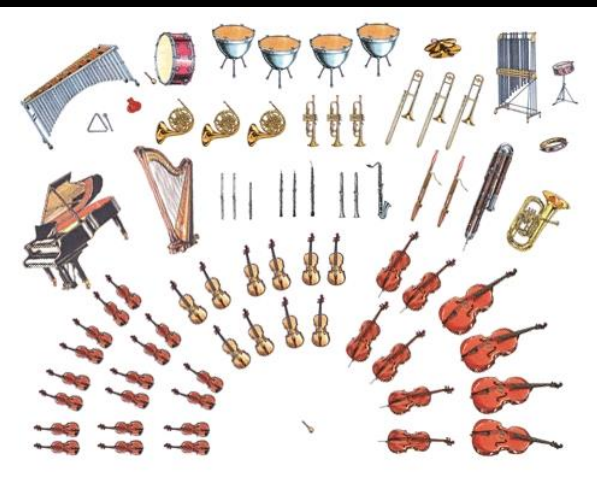


© 2012 Cristin Lind
www.durgastoolbox.com

Read Scores and Librettos and join English Horns & Oboes

Symphony No. 5 in C Minor Op. 67

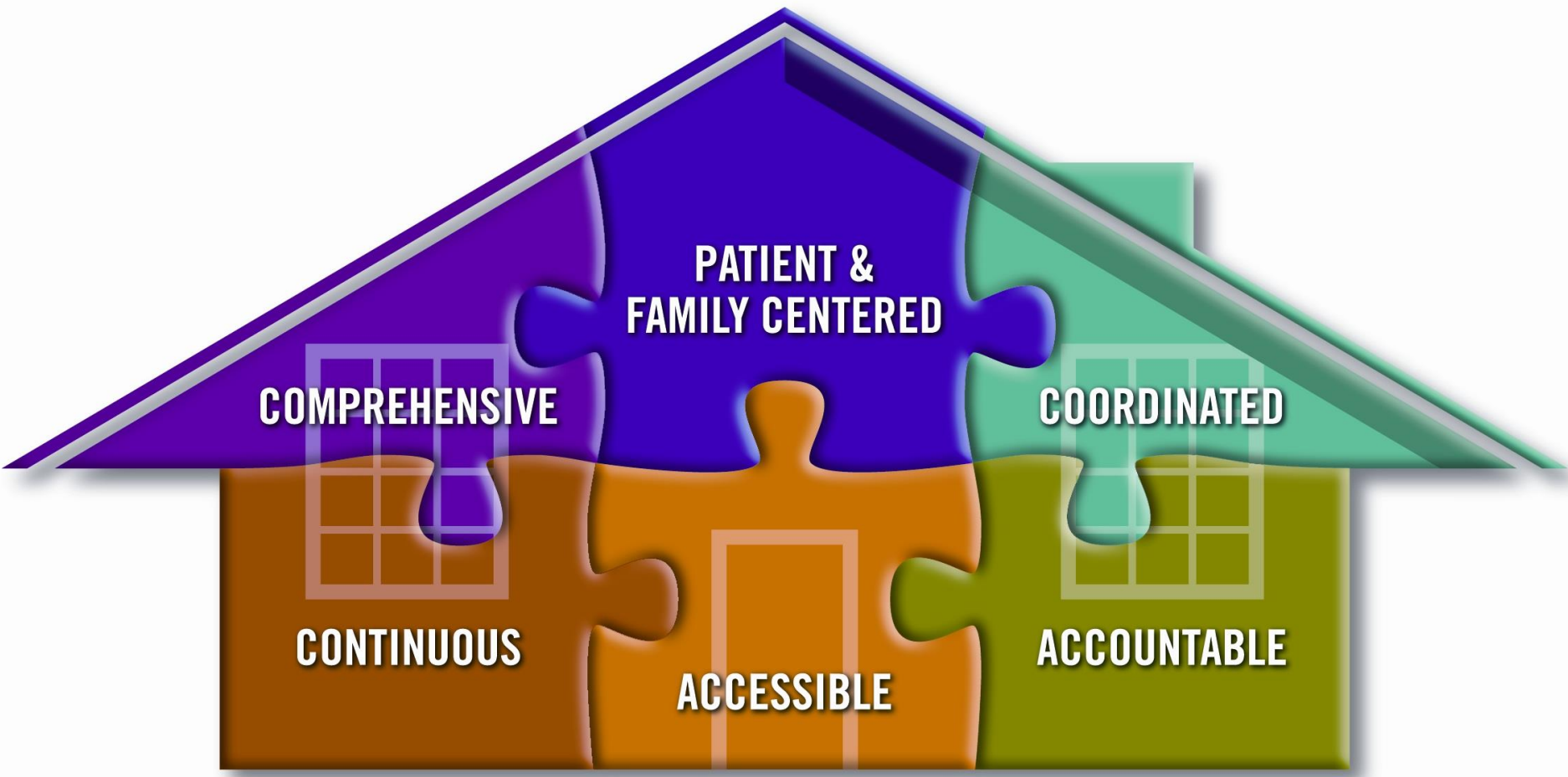
Ludwig van Beethoven
Transcribed by Ernst Liss



Objectives

By the end of this discussion, you should be able to:

1. Identify barriers to truly effective care coordination for CYSHN
2. List ways that we might be able to help better work across traditional barriers
3. Discuss how we might better align the medical home as a valuable partner in care coordination
4. Commit to a small change in your practice to overcome identified barriers



**PATIENT &
FAMILY CENTERED**

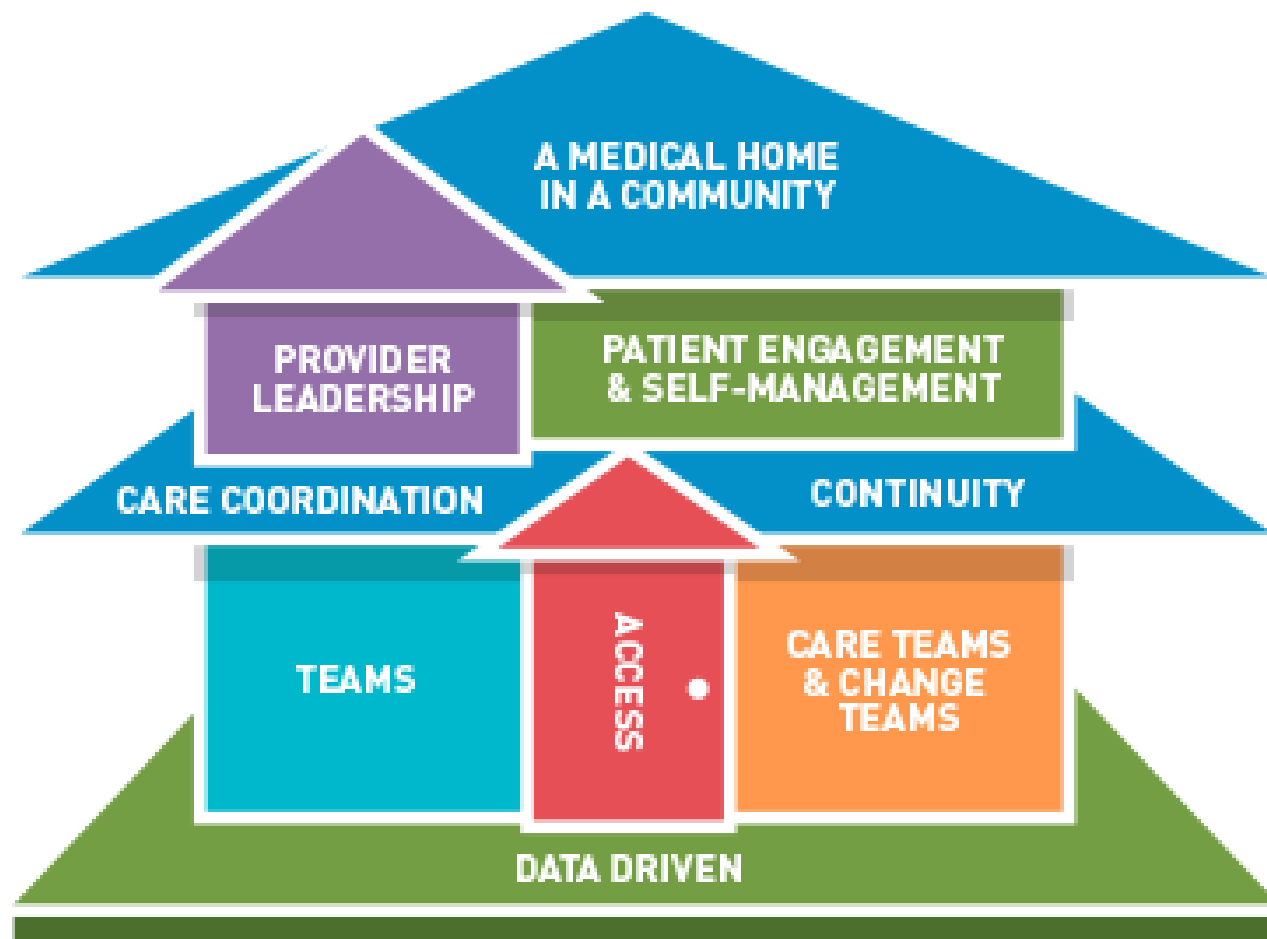
COMPREHENSIVE

COORDINATED

CONTINUOUS

ACCESSIBLE

ACCOUNTABLE





DREAM SMALL

IT'S YOUR ONLY HOPE FOR SUCCESS, REALLY.



Jot down 2-3
barriers that you
encounter in
terms of care
coordination





Meet | where
people | they
are



Get Girls Off to School 6-7

Commute 7-8

Clinic meeting 8-9

Patients 9-12

2 overbooks

Leave Clinic at 1245

Missed Resident Conference
12-1

Medical Executive Committee
1-2



Budget Meeting 2-3

Charting 8-10

Homework/Bed 7-8

Make Dinner 6-7

Commute 5-6

Division Chief Meeting
4-5

Conference Call with Dean
3-4

What do we want from Mona?



How can we meet her
where she is?

What can we do to overcome the barriers in
connecting effectively with a child's primary care
medical home?



One minute paper exercise* Date:_____ Name:

List 2-3 core ideas that have emerged for you as important during the program.

1.

2.

3.

List 2-3 questions that have surfaced for you relevant to content presented.

1.

2.

3.

What are you going to do differently as a result of what I have learned? These may be considered your commitments to new actions. "Commit each day to change something for the better"

1.

2.

3.

**AUTHENTIC
PARTNERSHIPS
TAKE TIME**

- TIME

TO LISTEN,

TIME TO
LEARN

**AND TIME
TO GROW**

TOGETHER.

What would your wish
list look like?

How do we create
authentic partnerships
with primary care
medical homes?

Questions?



PLATITUDES

THOSE WHO DO NOT LEARN FROM CLICHÉS ARE DESTINED TO REPEAT THEM.

The Take Home

- We all want what is best for kids
- Our systems are misaligned
 - Incentives
 - Measures
 - Time and Space
- Systems must change
 - We must lead that change
- Start Small, Fail Small
- Small Wins lead to bigger ones
- Gotta start somewhere... Why not us, here and now!

Open Discussion

Engaging with Primary Care

Ben Hoffman, M.D.
Director of OCCYSHN

hoffmanb@ohsu.edu



Next scheduled webinar

Our next SPOC webinar will take place on **Thursday, March 15th, 2018, at 9-10:00 AM.**

The topic will be **Health Literacy** and Shared Plans of Care

Thanks for joining us!

