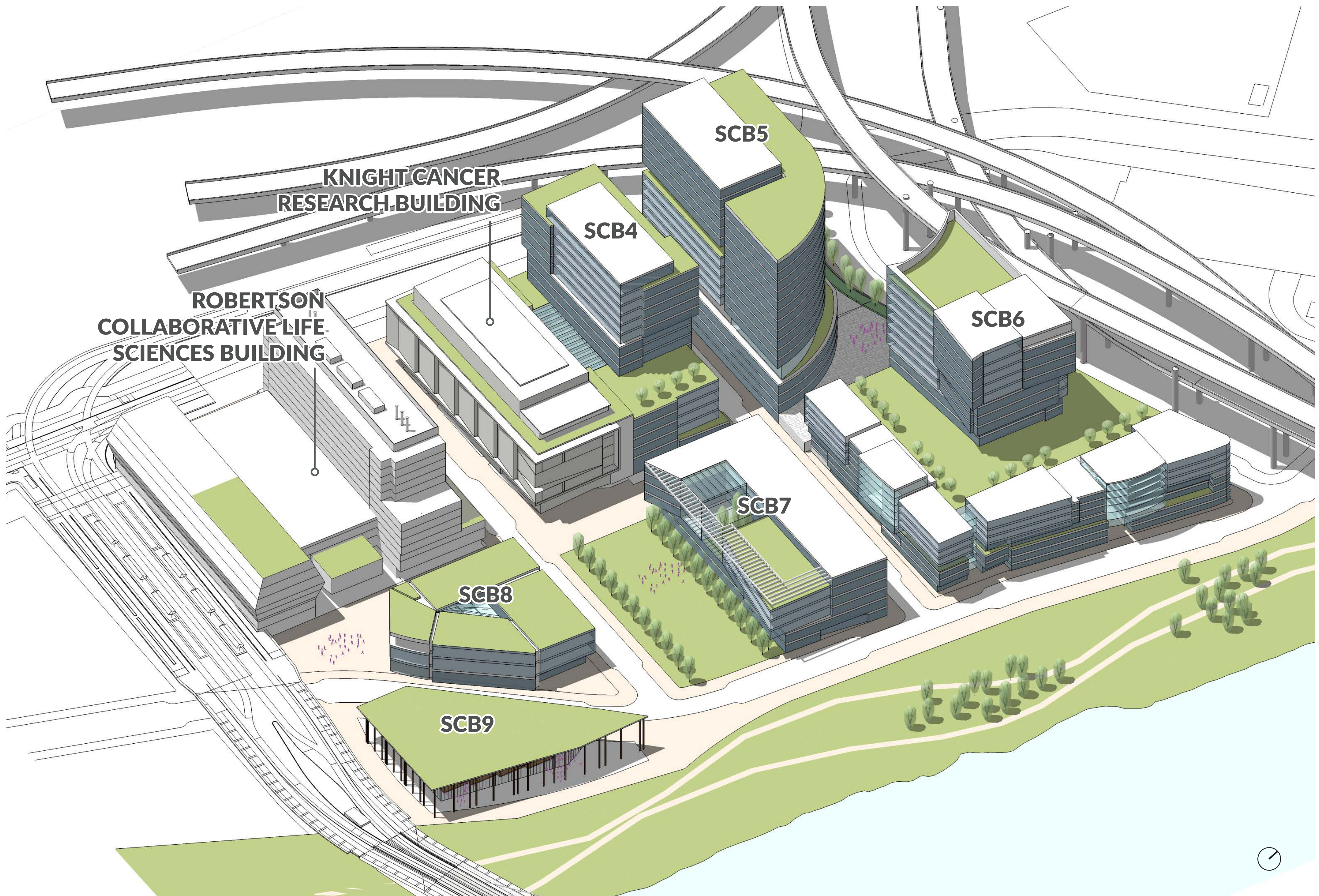




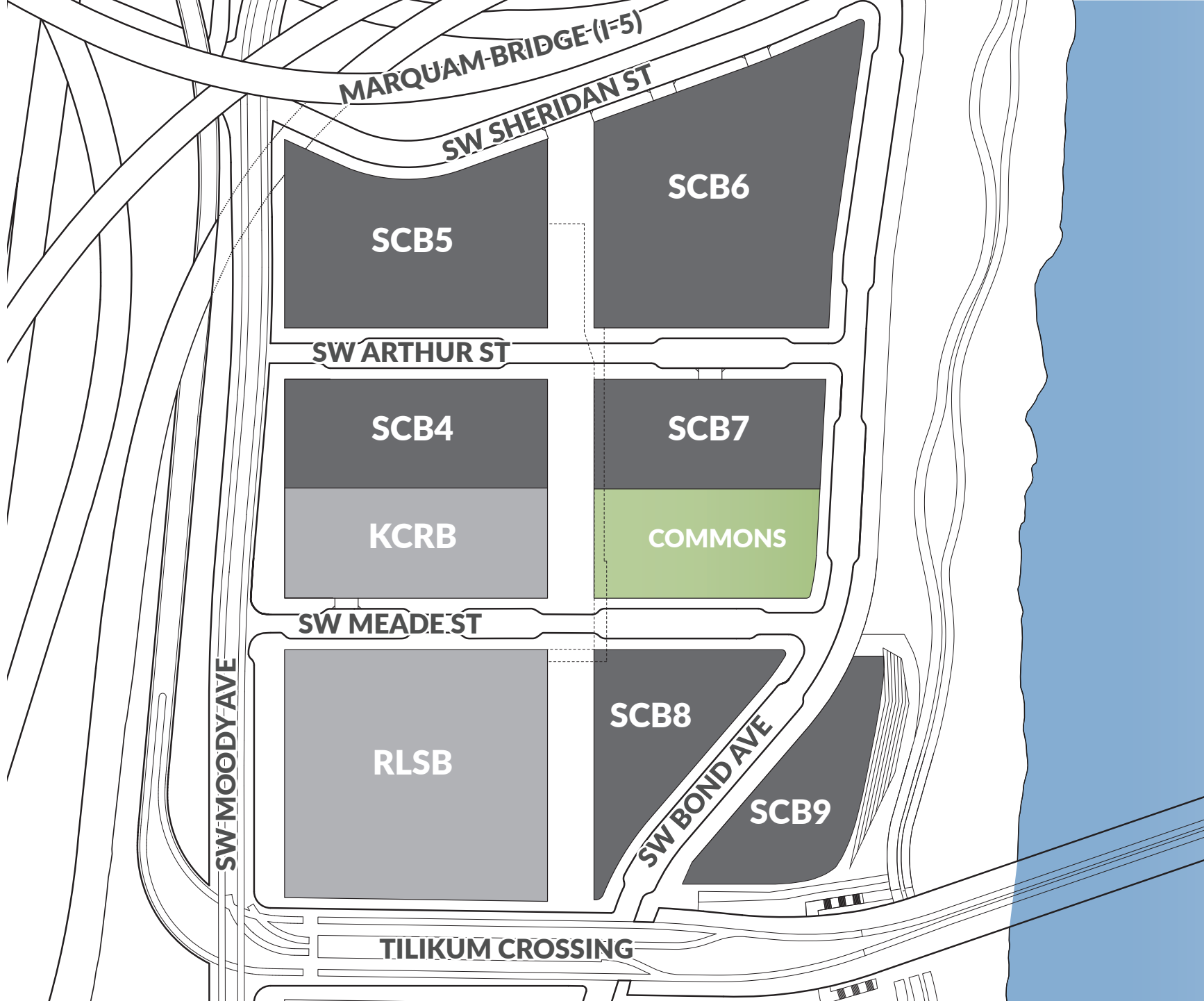
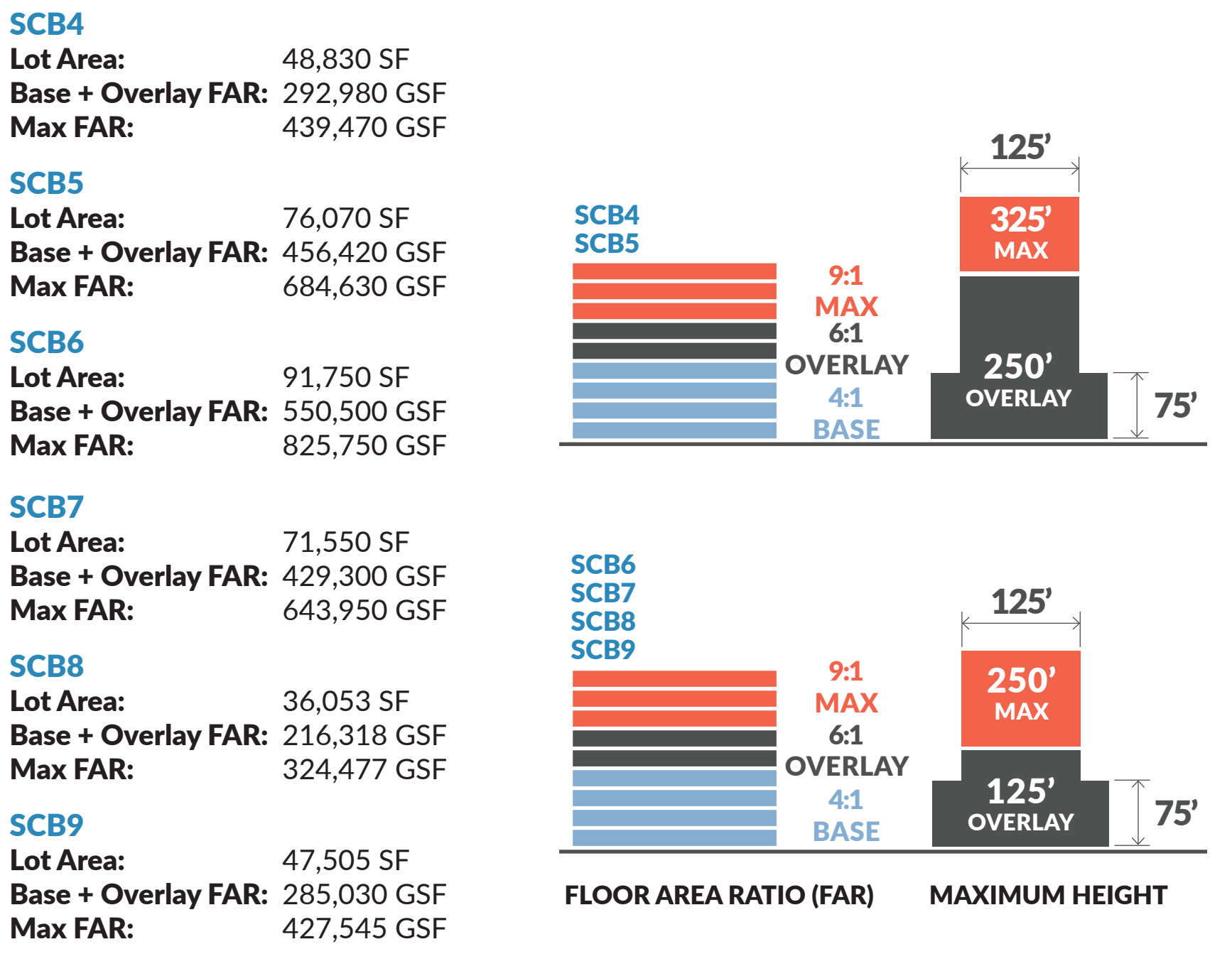
SOUTH WATERFRONT

2017 SCHNITZER CAMPUS PLAN

OHSU's South Waterfront Schnitzer Campus Plan was developed as part of an internal process to understand the development potential as it relates to block size, site access, regulatory frameworks, and other conditions. These materials do not reflect approved projects, and are used to help inform ongoing planning processes.



Future Build-Out Perspective Rendering



South Waterfront Context Map

