



ORGANIZATIONS IMPACTED

Through Outreach Efforts and Research Partnerships

Companies Represented in 2020 Symposia and TWH Courses

A-dec, Inc.	NW Portland Area Indian Health Board
Alaska Frontier Constructors	OEA Choice Trust
AFGE Local 2583 Vancouver Division	ON Semiconductor
Balfour Beatty Construction (US)	OR Dept. of Consumer & Business Services
Banyan	OR State Assoc of Occupational Health Nurses
Boise State University	OR Commission for the Blind
Cascade Centers	OR Dept of Consumer & Business Service
Cascadia Behavioral Health Care	OR Dept of Geology & Mineral Industries
Central City Concern	OR Dept of Human Services, Oregon Health
CESD	OR Education Assoc
Charter Mechanical	OR State Hospital
CIS	OR Humane Society
City of Eugene	Outside In
City of Hillsboro	PacificSource Health Plans
City of Portland	Packaging Corp.
Clackamas ESD	PCC Addiction Counseling Program
Clark County Sheriff's Office	Portland General Electric
Comcast	Portland Parks & Recreation
Community Vision	Portland Public Schools
ConfidentialTherapeutics.com	Proliance Orthopedic Associates ASC
Consumer Cellular	Propel Insurance
Cority	Providence Health & Services
Dept of Consumer & Business Services	Public Health Seattle & King County
Dept of Human Services (DHS)	Quality Health Solutions
Duckwall-Pooley Fruit	Red Dot
Durham & Bates Insurance	R&H Construction
Edwards Center Inc	Sacred Touch Massage
Family Inspired Recovery	SAIF
Foresight Security Consulting, LLC.	Salem Keizer Public Schools
Fortis Construction	Samaritan Health Services
Foster Poultry Farms	Serenity Lane
GE Aviation	Skanska USA
Georgia Pacific	Special Districts Assoc. of Oregon
Genentech	State of OR DCBS OR-OSHA
Goodwill	State of OR- DCBS - WCD
Gunderson LLC	State of OR Risk Management
Heron Creek	Trident Seafoods
King County	Unity Care NW
Lake Oswego School District	University of Washington
Leatherman Tool Group	University of Western States
LIVE LONGER LEBANON	VA Puget Sound
Marquis Companies	University of Zurich
MedManage	Vetsource
Microsoft	Vigor
Meret [®] Hotel Management	Virginia Mason
Morrow County Health Dept	WA State Dept of Labor & Industries
Mountain Rose Herbs	WGU
NIOSH	Willapa Harbor Health & Rehab
Northwest Human Services	

"Through your information I hope to educate all our workers on the best way to improve their sleeping habits and health. I wanted to let you know that what you said had an impact. Keep up the tough fight. We will all improve our lives because of it. Thank you very much."

— Oregon Pulp and Paper Company

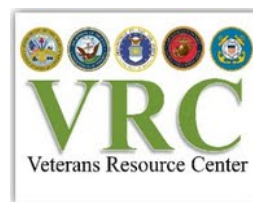
"This was the greatest in terms of presenting the information on TWH in a way that is not overwhelming and makes me feel like it can be accomplished in manageable "bites." Thank you!"

— Oregon Governor's Safety & Health Conference Attendee

"Can't wait to take this back to my firm. We will talk about this at our safety committee meeting next week!"

— Seattle TWH 101 Attendee

Select Partnering Organizations across Research Projects, 2011-2020



CONTACT US

Oregon Healthy Workforce Center
3222 SW Research Drive
Portland, Oregon 97239
ohsu.edu/ohwc
yourworkpath.com





COVID RESPONSE

Resources, tools, and knowledge shared with the community



Oregon COVID-19 Construction Task Force | Outreach Director, Dede Montgomery provides technical support to enhance safety, health, and well-being. The task force is a partnership of union and non-union industry professionals, with support from Oregon OSHA. OHWC created a webpage to share task force resources.

Wellness Task Force | Oregon Health & Science University established a COVID Wellness Task Force and asked OHWC Co-Director, Leslie Hammer, PhD and Researcher, David Hurtado, ScD to serve on the task force to develop and evaluate a Wellness Pulse Survey to assess employee psychological health and well-being, workplace experience, and wellness resources.

Region 10 Efforts | Outreach Director, Dede Montgomery was requested by NIOSH to provide COVID-19 industrial hygiene and safety support to workplaces in the Pacific Northwest and Region 10.

Agriculture | OHWC served as technical advisor to several groups and worker advocates in support of safety and health for farmworkers, specifically promoting engineering and behavioral control policies for fields and housing.

Mental Health & Suicide Prevention | Outreach Specialist, Nichole Guilfoxy sits on two separate state and regional committees to support mental health and suicide prevention with a focus on safety, health, well-being during COVID-19.



Visit the [COVID-19 and the World of Work & OHWC website](#) for more information

A MESSAGE FROM OUR DIRECTORS

Our *Total Worker Health*® Center of Excellence has worked to ensure that the most up-to-date resources and information are available to workers and employers throughout COVID-19. That involves drawing on our own expertise in Occupational Health Psychology, Industrial Hygiene, Engineering, Social Epidemiology, and Occupational safety to offer answers and supports to workplaces near and far. Our resources are designed to mitigate the psychosocial stressors employees are facing, such as job insecurity, job demands, family demands, and lack of control, to improve mental health and reduce anxiety.

Our safety resources and guidance are intended to improve workplace safety practices and reduce concerns around fear of exposure. Our translatable interventions target managerial practices, supervisor support, safety communication, and health behaviors.

The interconnectedness between work and home is more evident now than ever. Our Center and home Institute are working hard to provide the most relevant and timely resources during this time of crisis. We see it as our Mission. We see it as our Responsibility.

We hope you all are safe and well,
Leslie Hammer and Ryan Olson, Co-Directors, OHWC

CONTACT US

Oregon Healthy Workforce Center
3222 SW Research Drive
Portland, Oregon, 97239
ohsu.edu/ohwc
yourworkpath.com



Oregon Healthy Workforce Center COVID-19 Resources

Click each resource to learn more



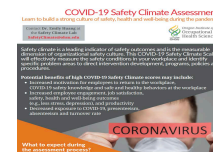
COVID and the World of Work

A resource page sharing evidence-based and curated content, such as videos, trainings, articles, and resources for workforce safety, health, and well-being during the pandemic



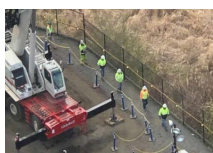
Pandemic Response Training for Supervisors /Managers

10 minute online leadership training to provide supervisor and managers with evidence-based strategies to support their workers during the pandemic



COVID-19 Safety Climate Survey

One of the first COVID Safety Climate assessments designed to help organizations evaluate culture, predict outcomes and promote safety and health of employees as they return to work



Oregon COVID-19 Construction Task Force Web Page

Resources developed by the task force to share best practices to help reduce exposure hazards and prevent COVID-19 infection within construction operations



Lead with Empathy during the COVID-19 Crisis

Published news article on the importance of supervisors/managers role modeling self care and how they can support their workforce's well-being



Worker well-being during COVID Video

OHWC Outreach Director, Dede Montgomery discusses a Total Worker Health approach to COVID-19 and the workplace

Oregon and the Workplace Blog

OHWC and Oregon Institute of Occupational Health Sciences at OHSU provides weekly updates on news, events, and resources to enhance workplace safety, health, and well-being. Links to each of OHWC's COVID related blog posts are provided below:

- *Message From Our Directors in Response to the Covid-19 Pandemic*
- *Lead with Empathy during the COVID-19 Crisis*
- *4 Key Strategies to Help Supervisors Support Employee Well-being during Covid-19*
- *Face Coverings On!*
- *New Webpage for Oregon COVID-19 Construction Task Force*
- *What Supervisors/Managers Can Do to Support and Respond to Employees during the COVID-19 Epidemic*
- *The air we breathe: From COVID-19 to Smoke*
- *COVID -19: Oregon Workplace Protections and Resources*
- *Workplace Resources for COVID-19*

For more blogs from OHWC visit, Oregon and the Workplace: blogs.ohsu.edu/occupational-health-sciences



Oregon Healthy Workforce Center
3222 SW Research Drive
Portland, Oregon 97239
ohsu.edu/ohwc

OHWC is housed within the Oregon Institute of Occupational Health Sciences at OHSU Grant: NIOSHU190H010154



IMPACT STATEMENT

Significant Outcomes and Lives Touched

Research Footprints & Impacts, 2011-2020



Recruited 2500+ participants
across 10+ industries in the
Pacific Northwest



Published 95+
peer-reviewed
manuscripts



Decreased # of
lost work days
due to injury¹



Decreased 'past 30 day'
alcohol consumption⁴



Improved slip hazard
prevention and safety
communication¹



Improved team
effectiveness^{2,3} and
work-life balance²



Improved knowledge of
health and safety^{2-4,7}



Improved workplace
supervisors' attitudes toward
Veteran employees⁵



Increased fruit and
vegetable^{1,7} and decreased
sugary snack and drink
consumption³



Increased frequency of
exercise^{3,7} and grip strength¹



Increased Family Supportive
Supervisor Behaviors^{2,3}



Increased supervisors'
referrals to *and* employees'
use of mental health
resources⁶



Improved blood pressure^{2,3}
and HDL cholesterol¹



Improved sleep duration^{3,7}
and sleep quality⁵



Improved BMI, objective
weight, waist circumference,
and % body fat⁷



Improved job performance
and reduced turnover
intentions and stress⁵

Additional Lives Touched through Community Outreach, 2016-2020



Trained 97+ companies
through TWH 101 class and
symposia



4,000 + listens to our podcast
"What's Work Got To Do
With It?"



YourWorkpath

9,600 + page views for
"YourWorkpath"



400+ Facebook followers
1060+ Twitter subscribers