

2023 Forum on Aging in Rural Oregon

Generations Together: A Collaborative Network for Change

Stephanie Hooper, President, AGE+

Bandana Shrestha, State Director, AARP Oregon

Peggy Maguire, President, Cambia Health Foundation

Thank you to our partners:



Agenda

- Introductions
- Updates since last year
- Poll questions – we want to hear from you!
- Looking ahead: impact network and collaboration
- How you can be involved

Introductions



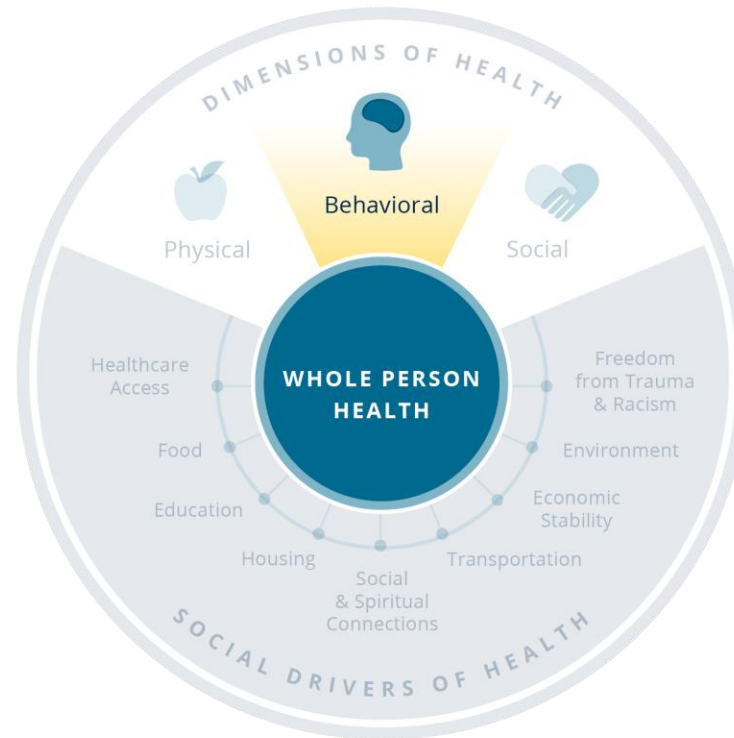
Cambia Health Foundation

Cambia Health Foundation is the corporate foundation of Cambia Health Solutions. Founded in 2007, the Foundation has funded over \$110 million in grants to advance person-focused and economically sustainable healthcare. We support whole person health at every stage of life and build a just and inclusive health care system for all.



We do this through:

- **Grantmaking**
- **Convening & Thought Leadership**
- **Awareness & Engagement**
- **Responsible Stewardship**



Vision & Strategy:

- **Vision:** Advancing Equity through Whole-Person Health
- **Strategy:** To expand access to behavioral health in underserved communities.

Our 2022-2026 priority areas of focus



Resilient Children and Families

Pregnancy, Infants, and Children up to age 8



Healthy and Connected Aging

Adults age 55+



Health Care Workforce

Paid and Unpaid Caregivers

Behavioral health access is a key



component of each of these areas



“Aging is not just a problem; it represents a real and thrilling challenge. It is one thing to recognize that older people represent the nation’s greatest single resource available, and it is quite another to do something about it.”

- Dr. Ethel Percy Andrus
AARP Founder

THE AGE+ STORY

Who we are:

AGE+ is an Oregon-based 501(c)(3) public charity that works to empower communities of all ages to value and care for older adults through innovative solutions and awareness building.

Our proven model:

We employ an asset-based community development (ABCD) model to address issues impacting older adults with limited resources.

Key Initiatives?

- Circles of Care model of neighbors helping neighbors age in community
- Education, Outreach & Advocacy to Catalyze Change
- Affordable Housing for low-income rural older adults
- Technical Assistance to bring an aging lens to mainstream initiatives
- Ties that Bind supporting Grandparents Raising Grandchildren

Our goal:

Ensure all older Oregonians have equitable opportunities to age and thrive in their communities.





Updates Since Last Year



SHARED FUTURE OREGON

A MULTI-SECTOR PLAN FOR LIVING + AGING
TO BECOME AN AGE-FRIENDLY STATE

OREGON NEEDS AN ALL-HANDS-ON-DECK APPROACH



WE NEED TO WORK TOGETHER ON A SYSTEMS-BASED SOLUTION THAT TOUCHES ALL MAJOR AREAS OF THE AGING LIFE EXPERIENCE.

WE NEED TO LISTEN TO COMMUNITIES.



WHAT IS A MULTI-SECTOR PLAN FOR LIVING + AGING?

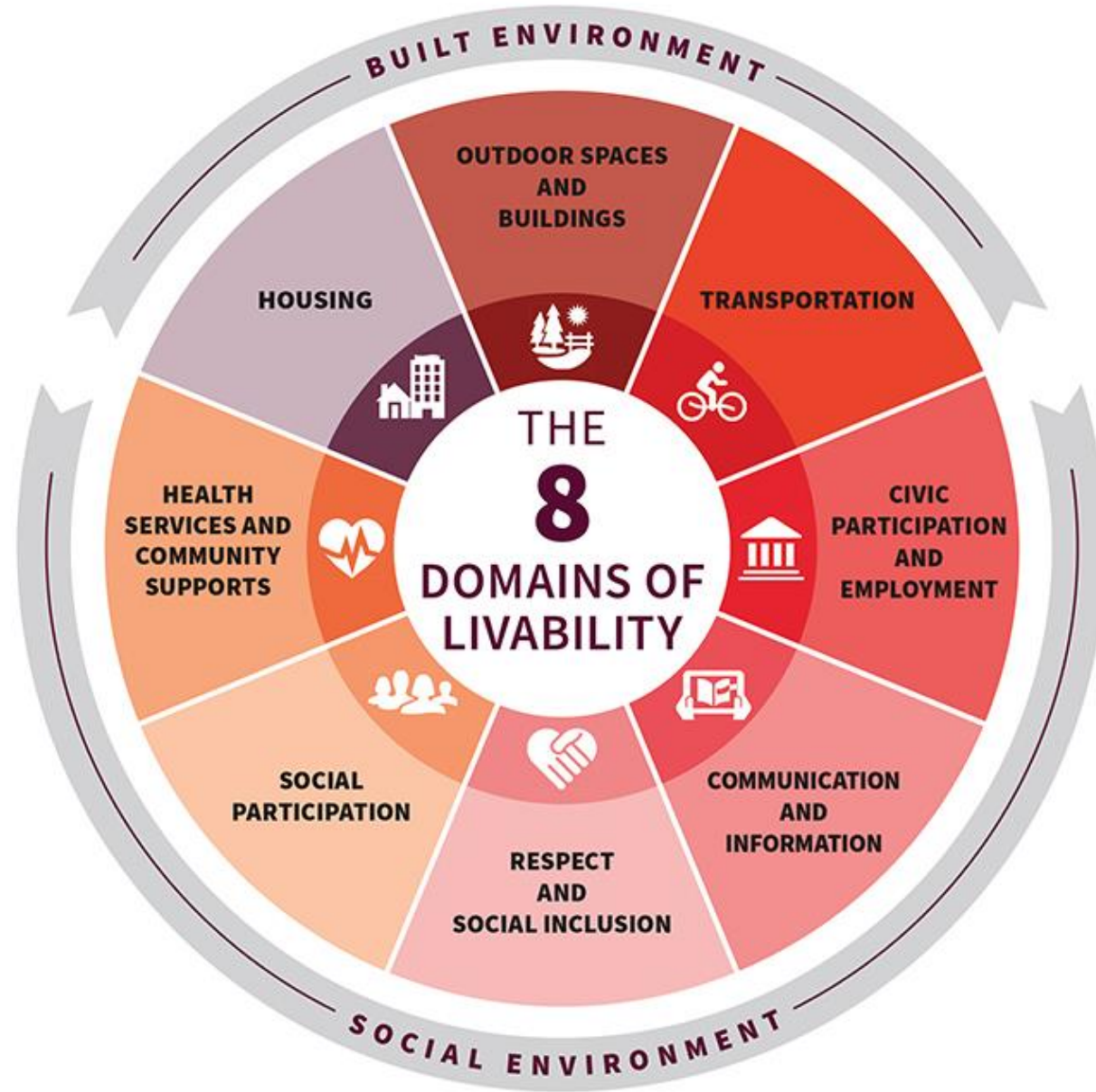
- It's a cross-sector effort that includes strategies for 10+ years
- It includes a broad pool of stakeholders from the beginning of the process
- It's institutionalized by executive and legislative branches
- It's developed to guide the restructuring of state and local policy, programs and funding that is geared toward aging well in the community

BENEFITS COMMUNITIES BY:

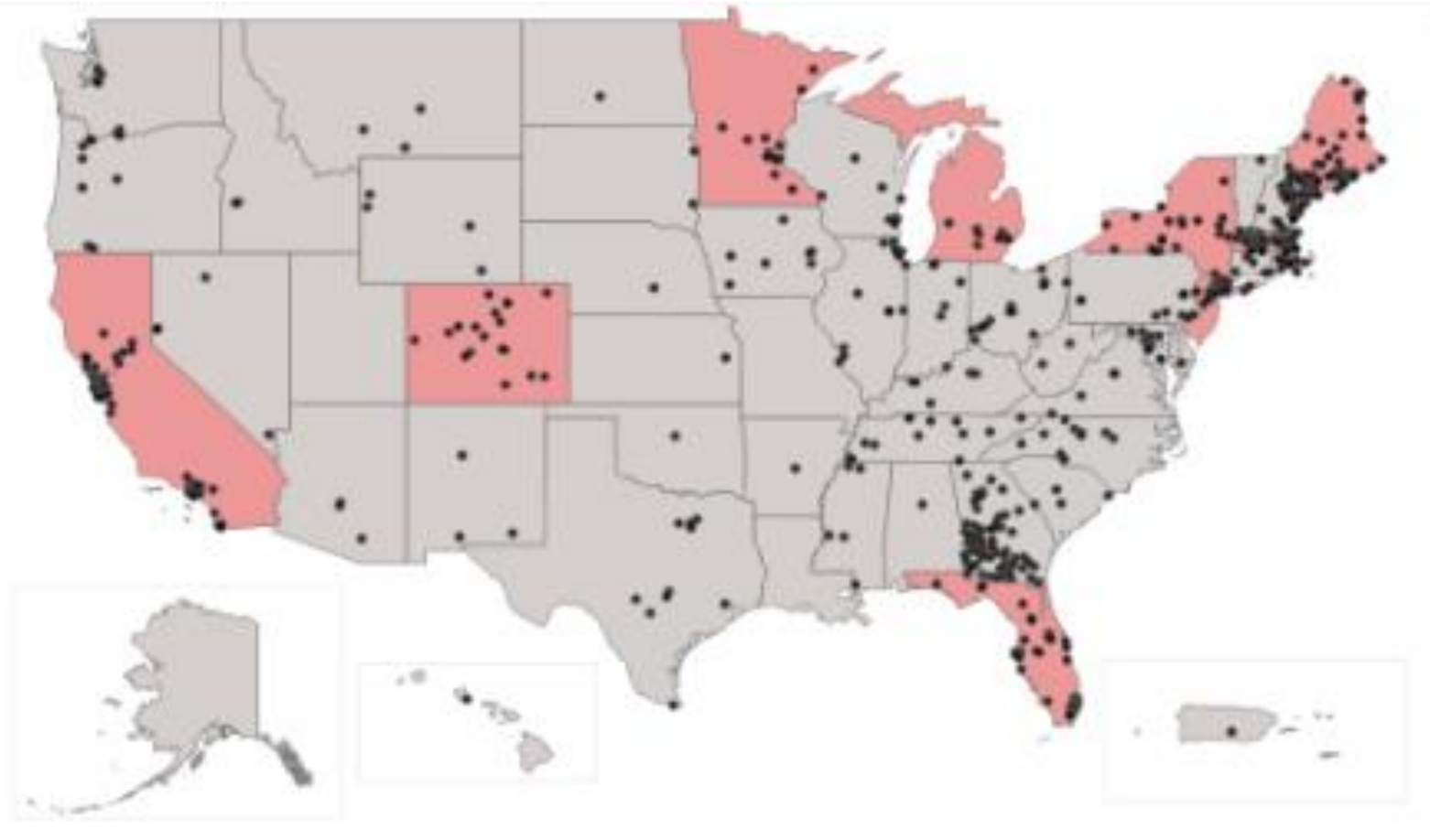
- Building partnerships among government agencies and departments
- Facilitating collaboration among diverse groups, families, businesses and many more public and private stakeholders
- Promoting equity and inclusion to combat bias and discrimination
- Raising awareness and responding to the impact of aging policy across the lifespan

OR MPA

Building an Age-Friendly Oregon



AARP Network of Age-Friendly States and Communities



10 states and territories

753 communities

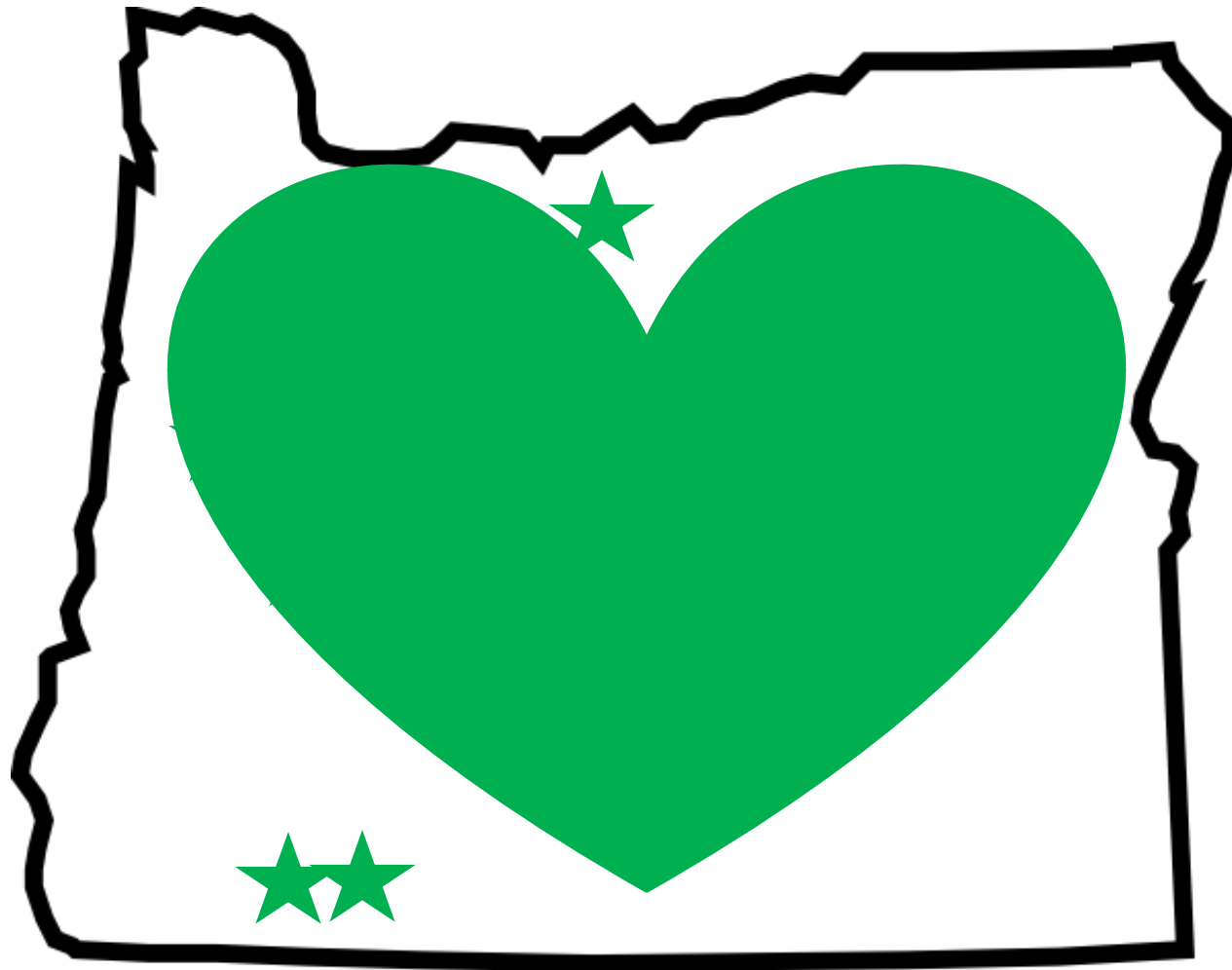
SMALLEST: *Hart's Location, New Hampshire (pop. 43)*

LARGEST: *New York City (pop. 8,622,698)*

Over 100 million people live in an area covered by the age-friendly network

www.aarp.org/age-friendly

Oregon Age-Friendly Communities



Ashland, Hood River, Independence*, Monmouth*
Mosier, Multnomah County, Newberg, Portland, Salem,
Springfield, Sisters, Talent



An age-friendly community is a livable community for people of all ages. — Getty

Learn how to become a member of the AARP Network of Age-Friendly Communities:

Introduction

1. Getting Started
2. Planning
3. Implementation
4. Evaluation
5. Connecting

SHARED FUTURE OREGON IS SUPPORTED BY:



AARP chapters are separately incorporated affiliations of AARP

N/NE Portland

AARP Chapter #5264

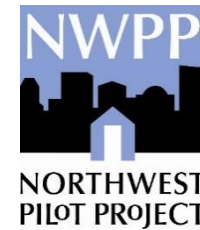


THE BUREAU OF
**PLANNING &
SUSTAINABILITY**

CENTRAL OREGON
Disability Support
Network



Aging in the
Gorge Alliance



Bloom Anew



Experience Making a Difference



SENIOR & DISABILITY
SERVICES
A Department of RVCOG

AGE+
Communities + Generations + Innovations

We want to hear from you:

- Get out your phone!
- Three ways to join:
 - Scan QR code on slide
 - Type pollev.com/maevemcclellan186 into browser or
 - TEXT 22333 MAEVEMCCLELLAN186 to join



🌐 When poll is active, respond at **Pollev.com/maevemcclellan186**

📱 Text **MAEVEMCCLELLAN186** to **22333** once to join

Poll Question

**What excites you most
about Shared Future
Oregon?**



What excites you the most about Shared Future Oregon?

🌐 When poll is active, respond at Pollev.com/maevemcclellan186

📱 Text **MAEVEMCCLELLAN186** to **22333** once to join



Powered by  **Poll Everywhere**

Start the presentation to see live content. For screen share software, share the entire screen. Get help at pollev.com/app

Poll Question



**In your work, who
do you collaborate
with the most?**

When poll is active, respond at pollev.com/maevemcclellan186

Text **MAEVEMCCLELLAN186** to **22333** once to join

In your work, who do you collaborate with the most?

Business

Education Systems

Culturally Specific Community Based Organizations

Faith Based and Service Organizations

Communities, Cities, Counties and Tribal Governments

Non-profit and Philanthropy

Health Systems

Powered by  **Poll Everywhere**

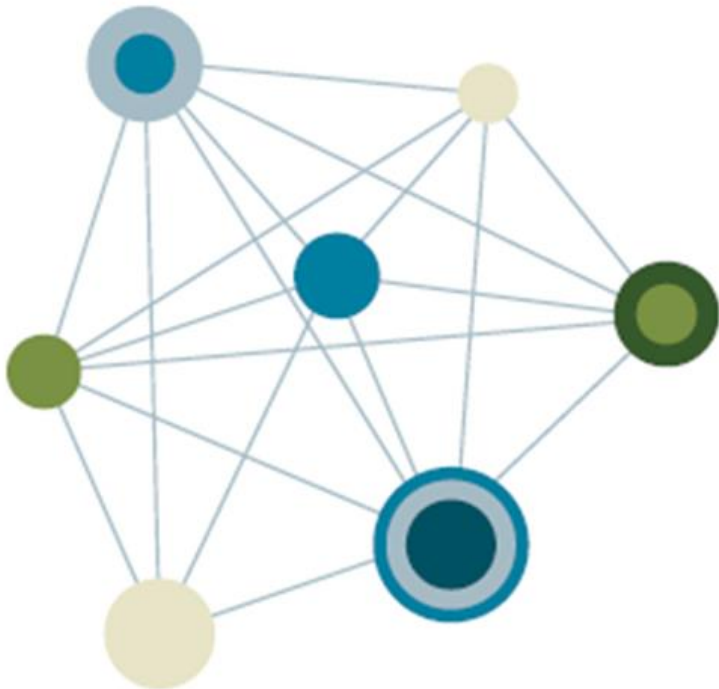
Start the presentation to see live content. For screen share software, share the entire screen. Get help at pollev.com/app



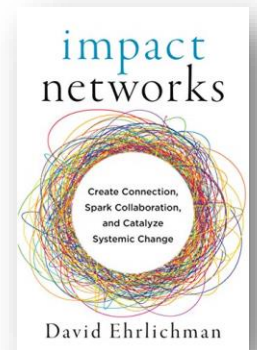
Generations Together

PRINCIPLES OF AN IMPACT NETWORK

Organization as a Node



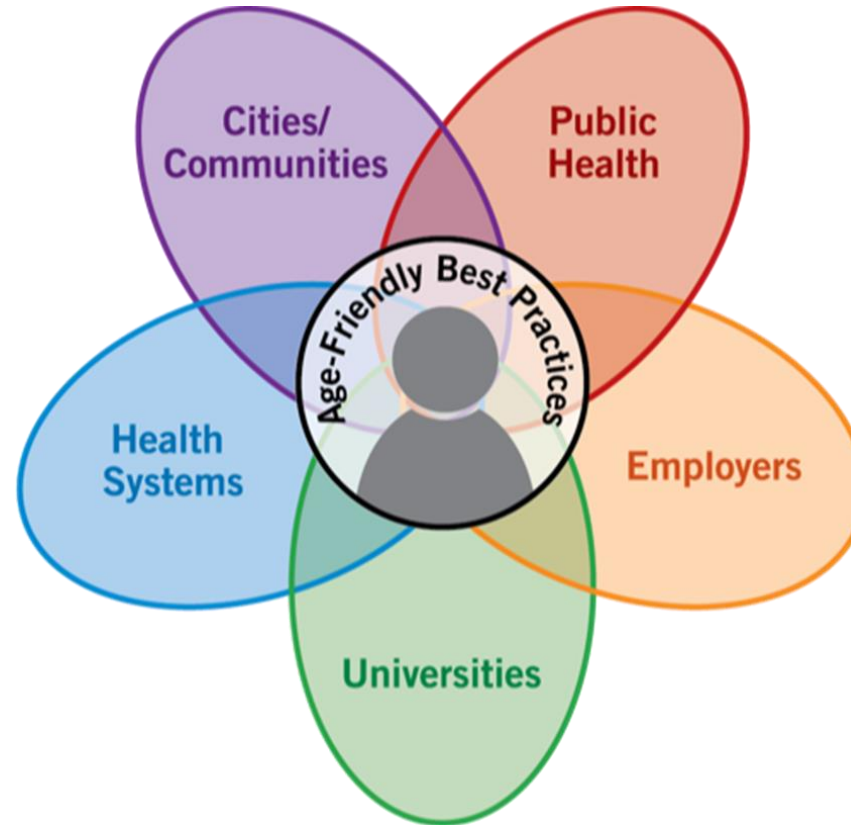
- MISSION, NOT ORGANIZATION
- TRUST, NOT CONTROL
- HUMILITY, NOT BRAND
- NODE, NOT HUB



Ehrlichman, David; *Impact Networks*,
October 2021

What is an Age-Friendly Ecosystem?

- The John A. Hartford Foundation introduced concept as a way of addressing systemic ageism
- Encourages adoption of age-friendly best practices across sectors because cities and communities cannot be age friendly without systems alignment
- Age-Friendly Best Practices eliminate ageism, foster liveable communities, improve health care, integrate social services and inform public health



Fulmer, et al. Moving Toward a Global Age-Friendly Ecosystem, *Journal of the American Geriatrics Society*, July 2020

“Making systems work – whether in health care, education, climate change, making a pathway out of poverty – is the greatest task of our generation.”

– Atul Gawande, “How Do We Heal Medicine”, TED2012



Generations Together

A collaborative network for change

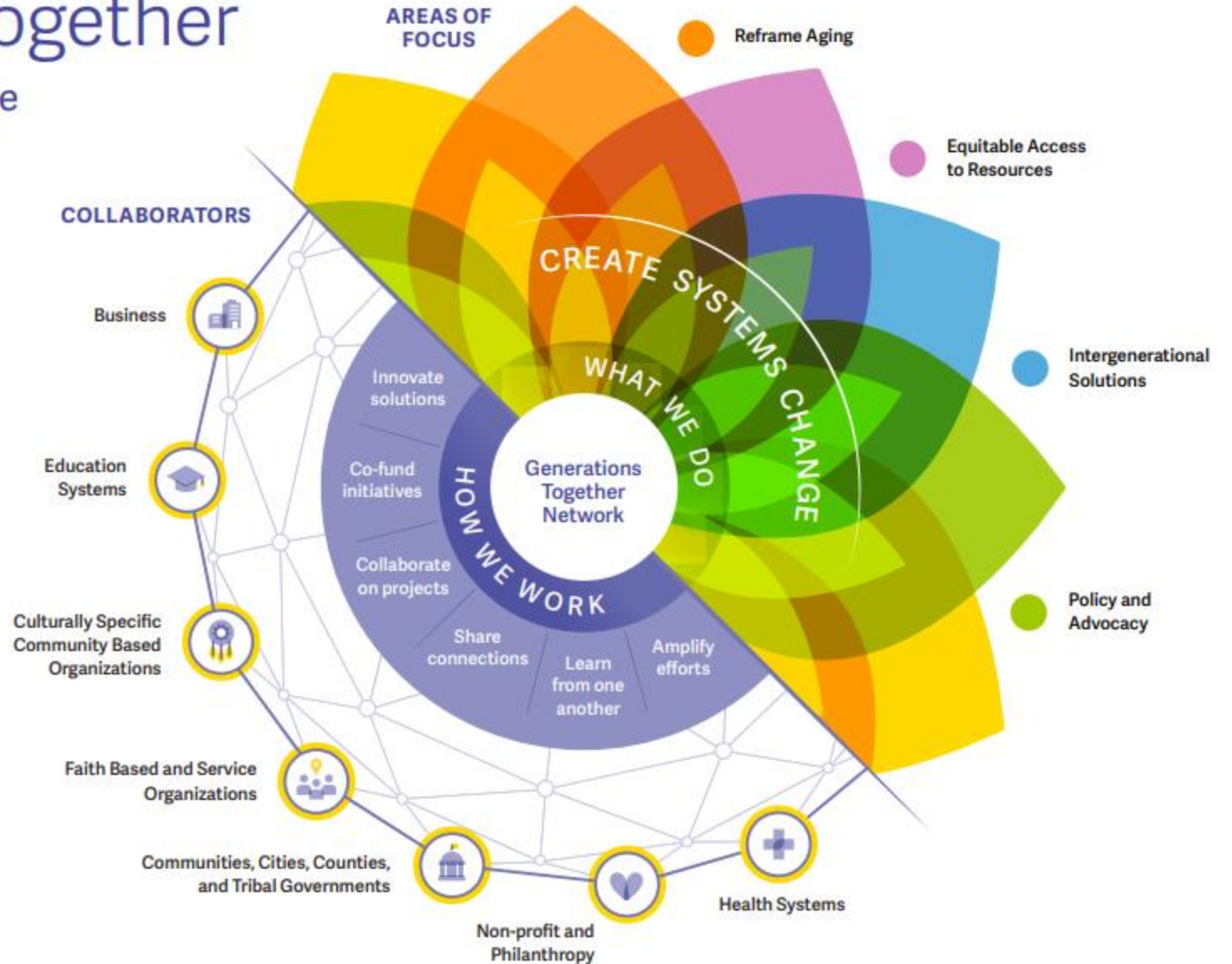
OUR VISION



By 2030, all generations of Oregonians will be more connected, valued, and have equitable access to the resources needed to live and age well together.

OUR MISSION

Grow a cross-sector network to advance community well-being by embracing the value of all people at all stages of life.



Poll Question

**Where do you see
the most value from
this collaborative
network?**



When poll is active, respond at pollev.com/maevemcclellan186

Text **MAEVEMCCLELLAN186** to **22333** once to join

Where do you see the most value from this collaborative network?

Innovate solutions

Co-fund initiatives

Collaborate on projects

Share connections

Learn from one another

Amplify efforts

Powered by  **Poll Everywhere**

Start the presentation to see live content. For screen share software, share the entire screen. Get help at pollev.com/app

Poll Question



In what sector would you like to develop new partnerships?

When poll is active, respond at pollev.com/maevemcclellan186

Text **MAEVEMCCLELLAN186** to **22333** once to join

In what sector would you like to develop new partnerships?

Business

Education Systems

Culturally Specific Community Based Organizations

Faith Based and Service Organizations

Communities, Cities, Counties and Tribal Governments

Non-profit and Philanthropy

Health Systems

Powered by  **Poll Everywhere**

Start the presentation to see live content. For screen share software, share the entire screen. Get help at pollev.com/app

“The moral test of a government is how that government treats those who are in the dawn of life, the children; those who are in the twilight of life, the elderly; and those who are in the shadows of life, the sick.”

– Hubert Humphrey



Join us!

2023 Forum on Aging in Rural Oregon

Thank you!



Peggy Maguire, J.D.
margaret.maguire@cambiahealth.com



Bandana Shrestha
bshrestha@aarp.org

Stephanie Hooper
shooper@ageplus.org

